



Volume 34, Number 1, April 2020
www.wlmd.org

CHEMICAL TREATMENT PLANS - 2020

WLMD receives a permit annually from DNR to chemically treat weeds in Wind Lake. Most of the areas treated are shallow, weed-choked and restrict lake access for property owners. The plan is to treat when the conditions warrant, usually in early May, and early June, weather permitting. Treatments to control the Starry Stonewort (SSW) are also planned.

The DNR permit for the chemical treatment is available on the WLMD website. Go to wlmd.org. The link to the permit is on the home page, and on the aquatic plant page.

The lake is considered the "waters of the State". Treatments will be conducted to try to maintain access for property owners and lake users.

When the treatment takes place, shorelines adjacent to treated areas will be posted with bright yellow signs, indicating what herbicide has been used and when it was done. The notice will also indicate if there are any recreational use restrictions following the treatment. The boat launch will also be posted with a treatment map. Because weather, including winds, affect the ability to conduct treatments, last-minute changes may occur. We will keep the wlmd.org website up to date as much as possible on when and where treatments are taking place.

The plants that are targeted for treatment include milfoil, curly-leaf, SSW and filamentous algae. Occasionally, native plants are treated, but only if they are blocking navigation areas. DNR has the final say in all the treatment areas for chemical control and may deny the treatment of specific areas.

Let us know if you have unusual weed problems. We will check it out and see if it is something that we can treat. Please call or email with questions or concerns.

ROADSIDE WEED PICKUP

We will continue the roadside weed pickup program this summer. **Lake weeds only** can be placed on the roadside for pickup. Please make sure the pile is close to the side of the road and not setting back up against a building or tree-line. **We will not be picking up "ice-off" debris.**

Do not put lake sediment, dirt, rocks, branches, garbage or other debris in the piles or your piles will not be picked up.

Piles must be out by noon on Mondays and will be picked up between Monday afternoon and Wednesday evening.

The deadlines for putting LAKE WEEDS ONLY out for pick up are noon on:

Monday May 18

Monday June 22

Monday July 20

Monday August 24

Monday September 21

Monday October 19

Any changes to the schedule will be posted on the website, wlmd.org.

2020 Chemical treatment permit from DNR is now available online at WLMD.org (Click on Aquatic Plants) or by calling 262-514-3238.

NOTE: *The current pandemic may impact what we can safely do this year, including chemical treatments and the boat inspections. As of this newsletter printing, DNR has not completed their policy on how chemical treatments in 2020 may be affected. Check the website for current information.*

HARVESTING

The District plans to conduct harvesting on the lake again in 2020. Harvesting is primarily used to open up navigational channels on the lake in areas greater than 3 feet deep. The harvesting permit does not allow shoreline work. Harvesting will also be used to collect large mats of floating plants on the open water. We updated our Plant Management Plan in 2017 so we are now working under the third year of a 5-year DNR permit to harvest.

At the direction of the 2019 Annual Meeting, the District is continuing to investigate the costs associated with purchasing a harvester and running our own harvesting program instead of contracting. While some costs are coming together, other issues still remain to be finalized. To identify the true cost of the equipment, the District has applied for a grant to help fund a harvester. If the grant is awarded, the District is under no obligation to use the funds until and unless the Annual Meeting approves the purchase.

Although some Board meetings have been canceled, it is still the Board's goal to have the information finalized prior to the Annual Meeting in September.

GEESE

Wind Lake has taken part in a goose-removal program for a number of years to reduce the numbers of geese on Wind Lake. This program has been very effective at keeping the numbers of non-migratory geese on the lake manageable. Excessive numbers of non-migratory geese contribute to water quality problems, including E-coli bacteria and increased phosphorus loadings (which increases plant and algae growth).

There have been changes to the permitting program, including changes between the Federal and State responsibilities. That may impact what we are able to do. We are still waiting to receive new forms from the State - we hope they arrive soon.

We are proceeding as though the roundup will take place. We hope to conduct the goose roundup again in mid-June when the birds are molting.

IF YOU HAVE NOT SENT IN A FORM PREVIOUSLY AND WE CAN GO ONTO YOUR PROPERTY TO REMOVE GEESE, PLEASE SEND IN THE FORM INCLUDED IN THIS NEWSLETTER.

Your permission will continue through multiple years unless you rescind it.

FREE VESSEL SAFETY INSPECTION

WLMD is again partnering with The United States Power Squadron and the Coast Guard Auxiliary to conduct boat inspections. Advanced registration is suggested.

June 6 - 9:00 am - 3:00 pm

Free 15-point inspections will be conducted at the DNR Public Boat Launch or at in-water moorings.

Pre-register by calling 262-895-7991. Make sure your summer boating is a safe one!

STARRY STONEWORT INVASIVE UPDATE

In August 2017, the highly invasive algae was found in Wind Lake: Starry Stonewort (SSW). First found in Wisconsin in Little Muskego Lake, it is now in Big Muskego, Long Lake, Lake Geneva, Silver Lake (Washington Cty), Green Lake, Little Cedar, Pike Lake, Sturgeon Bay, and Lake Michigan. It has also been found in a number of lakes in Minnesota. SSW is in over 200 lakes in Michigan and is in 10 lakes in Indiana.

SSW invaded Wind Lake differently than the other lakes. It was not found in the near-shore, shallow areas. It was found in the deeper zone, in the 4 to 8 foot depths. It was not found earlier because pre-infestation surveys looking for SSW focused on the near-shore areas.

After the discovery of SSW in Wind Lake, DNR funded a portion of a two-year grant application for a large-scale control project.

The project included two 50-acre treatments conducted over the summer in 2018. Additional plant surveys and treatments at the boat launches and two navigational channels are also included in the grant.

In spite of the treatments, SSW has continued to spread in Wind Lake. When first discovered in 2017, it was at 9.5% frequency; by the end of 2018, it was at 20.4%.

The last survey in 2019 showed SSW at 18.8%, at least a bit of a decline. The best control so far, seems to be in the two navigational channels that were treated. The challenge will be trying to maintain the navigational areas in Wind Lake and protecting the native plant community. More information, including maps showing the distribution of SSW will be available at the Annual Meeting in September.

GOOSE ROUNDUP APPROVAL FORM

YOU HAVE MY PERMISSION TO ENTER ONTO MY PROPERTY TO CATCH AND REMOVE GEESE.

I authorize representative from US Department of Agriculture - Wildlife Services and Wind Lake Management District to access the property listed below for the purposes of goose management. **This permission form has no expiration date and remains in effect unless you request to be removed from the approved site list.** So if you have signed up previously, you are all set. Please contact WLMD, 262-514-3238 if you wish to be removed from the list, have problems with geese on your property, or have any questions or concerns. Thank you for your assistance.

Name (PRINT) _____

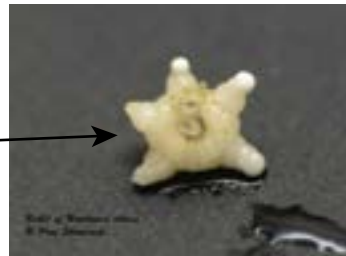
Lake Address _____

Phone _____

Signature (Mandatory) _____

Please return form as soon as possible!

Send to: WLMD, 30910 Royal Hill Rd., Burlington, WI 53105



Starry Stonewort with the tiny reproductive structure, usually visible in August-September



Photo: Grand Valley State University

Starry Stonewort creates large, dense pillows that crowd out everything else. It is very easily spread when boats or people pass over or through it.

WHAT'S THE DIFFERENCE?

Chara (Native)	Starry Stonewort
When you crush Chara, it has a very musky odor.	No musky odor.
Chara stems don't "crush"	SSW stems "ooze" when split and crushed.
Has a "uniform", tight appearance in the water.	SSW is more shaggy in appearance and has much more branching.
Has a thick, coarse, gritty feel (from the calcium coating)	No gritty feel.
No bulbils.	Has star-shaped bulbils (2 - 5 mm).
Usually grows to 2 to 3 feet tall.	Grows to 6 feet tall or more.
Chara does not react well to herbicide use because of the calcium coating.	SSW responds to Cutrine Ultra, with or without Hydrothol; and Clipper.
Very difficult to harvest because of its coarseness.	Difficult to harvest because of the amount of biomass.

NEED MORE INFORMATION?

If you do, check out our website. The site has:

- Meetings, schedules, agendas, and minutes
- Information about who to contact for various activities.
- Links to other lake-related sites
- The latest lake depth map of Wind Lake
- Other special notices are also posted on the site.

You can also send an email to info@wlmd.org to be put on a list to receive meeting notices and updates. If you do provide your email address to us, please be aware that your address then becomes part of our formal records. Then we have to provide them to someone making a request under the Open Records laws.

WIND LAKE WEBSITE AND EMAIL

www.wlmd.org

info@wlmd.org

BOARD OF COMMISSIONERS

Lake District Line	514-3238
Joe Bellante	895-6694
Mike Bluemel	895-2502
Ron Mayer	414-614-5859
Ralph Schopp	414-531-6020
Bruce Rosenquist	895-3942

Commissioners meetings are usually held the 4th Thursday of every month, with the November and December meeting combined. Meetings begin at 7:00 pm at the Norway Town Hall. Everyone is welcome to attend. **Note that meetings may be rescheduled: check the website for the latest information.**

ADDRESS SERVICE REQUESTED

Wind Lake Management District
30910 Royal Hill Rd.
Burlington, WI 53105