

424915088083900 WIND LAKE AT WIND LAKE, WI

LOCATION.--Lat 42°49'15", long 88°08'39", in NW ¼ SW ¼ sec.9, T.4 N., R.20 E., Racine County, Hydrologic Unit 07120006, at Wind Lake.

SURFACE AREA.--1.46 mi².

PERIOD OF RECORD.--February 1985 to current year.

REMARKS.--Lake sampled near center at the deep hole. Water-quality analyses done by Wisconsin State Laboratory of Hygiene.

WATER-QUALITY DATA, MARCH 4 TO AUGUST 27, 2015

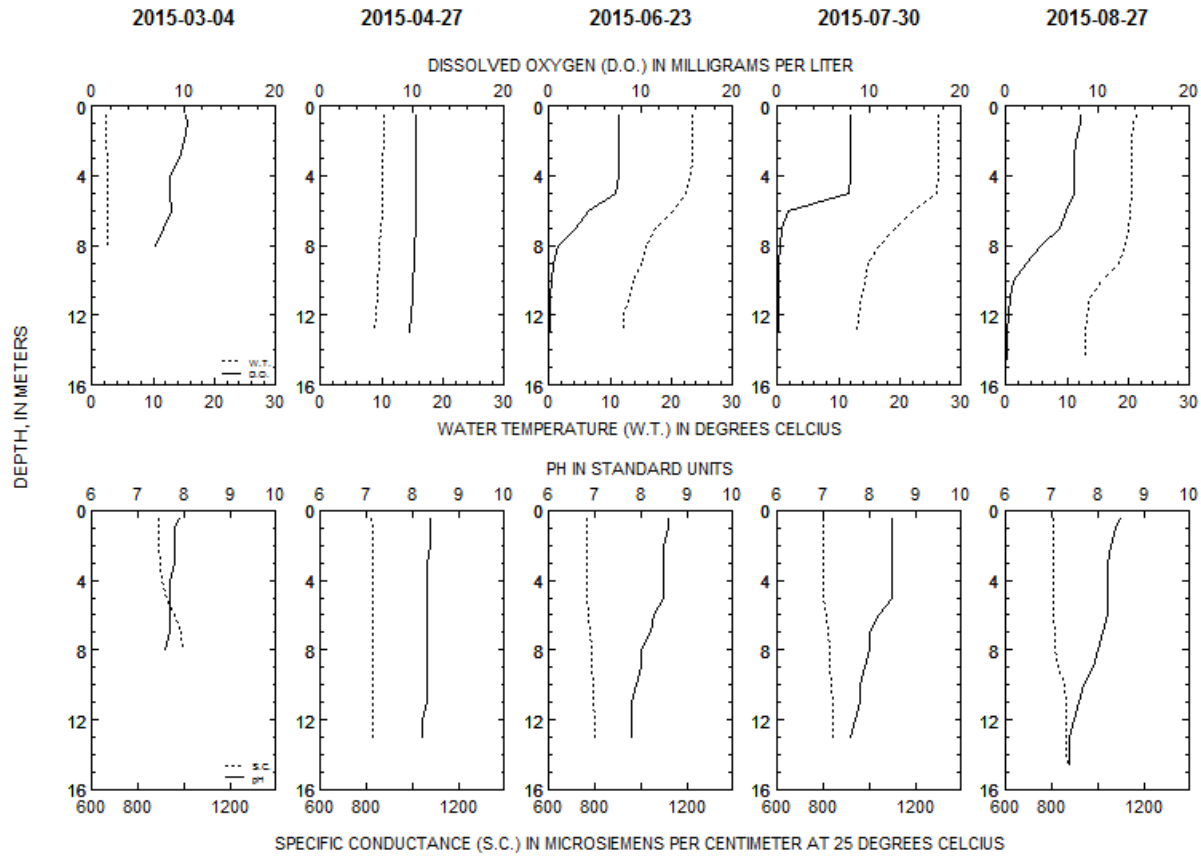
(Milligrams per liter unless otherwise indicated)

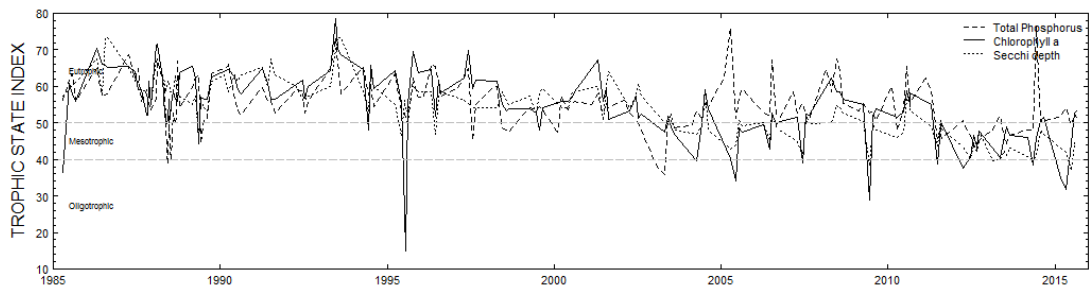
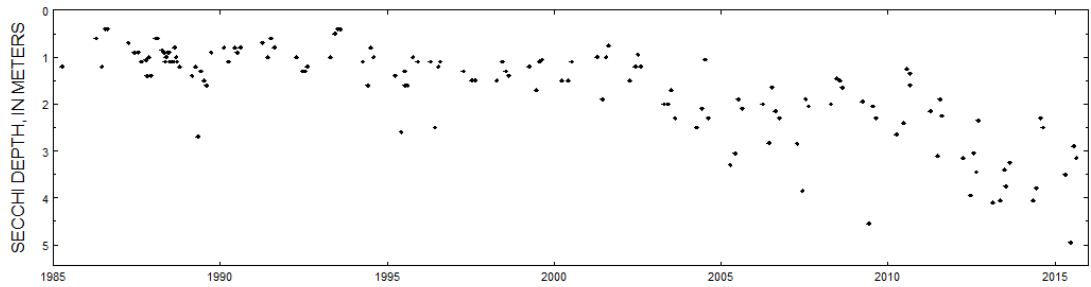
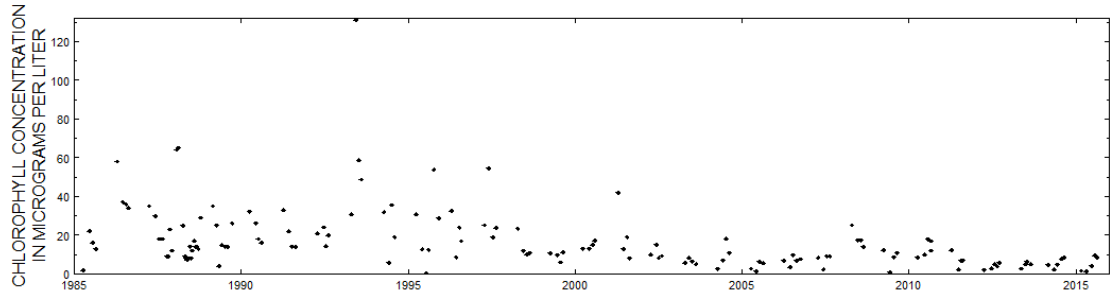
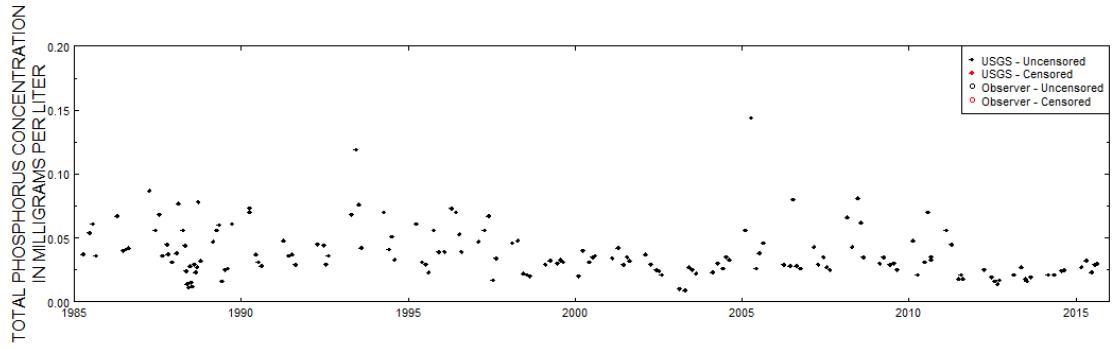
Date	Trans- parency Secchi disc, meters (00078)	Sam- pling depth, meters (00098)	Temper- ature, water, deg C (00010)	Specif- ic conduc- tance, unfltrd uS/cm @ 25 degC (00095)	pH, water, unfltrd field, std units (00400)	Dis- solved oxygen, mg/L (00300)	Chloro- phyll a trichro- -matic method, uncorr, ug/L (32210)	Phos- phorus, water, unfltrd mg/L as P (00665)	Ortho- phos- phate, water, fltrd, mg/L as P (00671)	Total nitro- gen, water, unfltrd mg/L (00600)	Ammonia water, fltrd, mg/L as N (00608)	Ammonia + org-N, water, fltrd, mg/L as N (00623)	Ammonia + org-N, water, unfltrd mg/L as N (00625)
MAR 2015													
04...	--	0.50	2.2	887	7.9	10.2	1.56	0.027	--	--	--	--	--
04...	--	8.0	2.6	995	7.6	6.9	--	0.037	--	--	--	--	--
APR													
27...	3.50	--	--	--	--	--	--	--	--	--	--	--	--
27...	--	0.50	10.3	823	8.4	10.4	1.14	0.032	0.006	1.6	0.105	--	1.4
JUN													
23...	4.95	--	--	--	--	--	--	--	--	--	--	--	--
23...	--	0.50	23.4	763	8.6	7.6	4.15	0.023	--	--	--	--	--
23...	--	13.0	12.2	800	7.8	0.1	--	0.262	--	--	--	--	--
JUL													
30...	2.90	--	--	--	--	--	--	--	--	--	--	--	--
30...	--	0.50	26.3	800	8.5	7.9	9.44	0.029	<0.002	<1.2	0.038	1.1	1.2
30...	--	13.0	12.9	844	7.6	0.1	--	0.350	--	--	--	--	--
AUG													
27...	3.15	--	--	--	--	--	--	--	--	--	--	--	--
27...	--	0.50	21.4	807	8.5	8.2	8.38	0.030	--	--	--	--	--
27...	--	8.0	19.4	816	8.0	3.7	--	0.085	--	--	--	--	--
27...	--	11.0	13.7	860	7.6	0.4	--	0.305	--	--	--	--	--
27...	--	13.0	13.0	863	7.4	0.2	--	0.416	--	--	--	--	--
27...	--	14.5	12.8	868	7.4	0.2	--	0.434	--	--	--	--	--



424915088083900 WIND LAKE AT WIND LAKE, WI

LAKE-DEPTH PROFILES, MARCH 4 TO AUGUST 27, 2015





Surface total phosphorus, chlorophyll a concentrations, Secchi depths,  
and TSI data for Wind Lake at Wind Lake, Wisconsin.